

**Welcome  
to our holiday apartment  
on the Lauchernalp!**

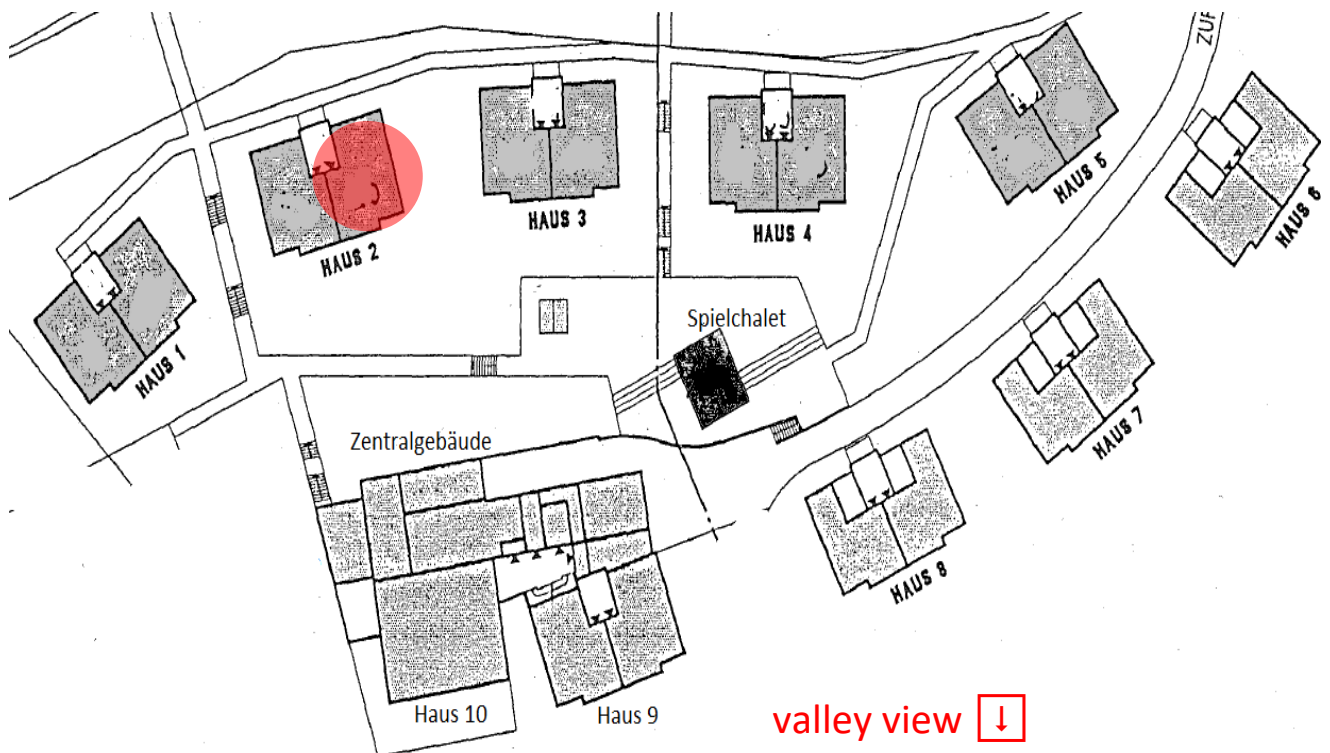


**Alpine Village**  
Lauchernalp  
Tilgi 21  
Wiler – Lauchernalp (Lötschen)

**Building #2**  
«Krokus»  
Apartment # 26  
2nd floor

**Google-Coordinates**  
46°24'39.2''N  
7°46'34.8''E

 **Cable car mountain station**



**valley view** 

getting there

## Arrival by car

From the north you can take the A6 motorway from Bern to Spiez. Here the cantonal road branches off in the direction of Kandersteg. With the easy and speedy loading of your car onto the train in Kandersteg, you can cross the Lötschberg in just 15 minutes and arrive comfortably in Goppenstein, the southern station of the Lötschberg tunnel.

From the south, take the Rhone Valley motorway from Lausanne or the cantonal road from Brig to Gampel/Steg.

From Steg and Goppenstein, the well-developed road leads directly into the Lötschental. The road is also passable in winter - winter equipment is required for the months of November to April.

There are enough paid parking spaces available at the valley station of the Wiler - Lauchernalp cable car.

**In winter, the Lauchernalp is car-free and can only be reached by cable car.**

**In summer you can drive to the Alpine Village via the Alp-Road, which requires a permit and is subject to a fee.** There are some public parking spaces available as well as visitor parking spaces. (please note the signalling)

The road is paved throughout, but narrow in places. In the case of oncoming traffic, the passing points must be used. The journey from Wiler to the Alpine Village takes about 15 to 20 minutes (please be aware of oncoming vehicles).

**Driving permits** for the Alpenstrasse from Wiler to Lauchernalp (summer only) can be obtained using the "parkingpay" app. Please enter the location (3918 Wiler-Lötschen) first. Then select "Permit" and then "Driving permit road Wiler-Alpen PW". You can then buy a permit for the desired period by stating the number of your vehicle registration plate.

The tariffs for the driving permit are as follows:

Day permit Fr. 20.00

3-day permit Fr. 25.00

Weekly permit Fr. 35.00

## Arrival by public transport

The north-south axis Bern-Lötschberg-Simplon takes you from Bern or Brig safely and comfortably to Goppenstein train station every hour. In Goppenstein you have a connection to a post bus to the Lötschental. The journey time from Goppenstein to Wiler is around 25 minutes. From there, the cable car takes you to Lauchernalp in just 6 minutes.

# Location apartment in Alpine Village:



Cable car mountain station

Apartment Building # 2

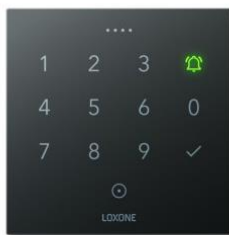


### **Access to the apartment / control of the apartment via smart home:**

Access to the apartment is via a code switch. This is located immediately next to the apartment door on the left-hand side.

Please enter the code assigned to you on the keypad and then press the OK tick. The door lock then opens automatically. You will be informed of the code in good time before arrival.

The access code is valid from the day of arrival (from 3 p.m.) until the day of departure (until 10 a.m.). Please make sure that you do not have to enter the apartment after 10 a.m. on the day of departure.



The apartment is equipped with a smart home system (Loxone). Usage is self-explanatory. Please make sure that you use all controls (including the touch panel in the living room) with the necessary caution.

**The apartment is not under video surveillance!** We respect the privacy of our guests!

### **Luggage transport (only during the winter season)**

Getting there:

You can buy a ticket for luggage transport at the valley station of the Wiler <-> Lauchernalp cable car and deposit your luggage in a lattice trolley. Your luggage will be brought to your house in the Alpine Village.

Tariffs and further information are available from the valley station.

Departure:

If possible, please report to the cash desk of the mountain station two days before departure and buy a ticket there. Bring your luggage to the main building of the Alpine Village. From there it is transported to the valley station of the Wiler <-> Lauchernalp cable car.

### **Restaurant "Tenne"**

The Tenne restaurant in the Alpine Village is closed until further notice. However, you will find other restaurants on the Lauchernalp in the immediate vicinity of the accommodation.

## Games room and chalet

All visitors can use the playroom with table tennis and table football in the central building as well as the playroom in the chalet.



## Wellness

In the main building there is a small indoor pool and a small wellness area with sauna and steam bath.



## Indoor Pool

The indoor pool can be visited free of charge by all owners and guests of the Alpine Village during opening hours.

The indoor pool is not supervised - you use it at your own risk! Parents/guardians are responsible for the supervision of their children themselves! Children under the age of 12 may only use the indoor pool under supervision.

Use by other people is not permitted. The indoor pool is open from December 18, 2021 to April 18, 2022 from 12 p.m. to 8 p.m.

**The indoor pool is closed in the summer season.**

## **Sauna & steam bath**

All owners and guests (minimum age: 16) of the Alpine Village can visit the sauna and steam bath free of charge during the winter season and during the opening hours of the indoor pool.

- Sauna and steam bath are unsupervised, you use them at your own risk!
- The area with sauna and steam bath is a nude zone.
- Bring your own bath towels. Please make sure that no sweat drips onto the wood in the sauna
- A maximum of 6 people are allowed in the sauna & steam bath area at the same time.
- Visits to the sauna and steam bath must be booked in advance with caretaker Michael Meyer (+41 79 471 56 82), stating the desired time. If there are still spaces available, the key can be picked up from the caretaker.
- Sauna & steam bath operating times: from December 18, 2021 to April 18, 2022 from 12:00 p.m. to 8:00 p.m.

**In the summer season, the sauna and steam bath are closed.**

## **Skitransport**

There are two free ski transports a day for guests of the holiday park:

- Morning transport: between 08.15 and 09.00
- Lunchtime transport: 12:45 p.m

Please place your skis/snowboards in the designated ski stand by 8.45 a.m. or 12.40 p.m. at the latest. (stand in front of house #3)

Depending on the snow conditions, the skis/snowboards are deposited below the terrace of the Zudili restaurant (next to the laundry) or at the top of the mountain station.

## **Interesting facts from A – Z**

### **waste disposal**

Rubbish bags of 35l or 17l, subject to a fee, are available in the Volg in Wiler (see under Shopping). The bags can be deposited in the container in the garage of the Alpine Village central building. There is a collection point for glass, paper, cardboard, PET and metal in the mountain station of the Wiler <- > Lauchernalp cable car.

### **Firewood**

Firewood for the Swedish stove can be obtained from the caretaker (CHF 20.00/sack).

### **Shopping**

In the village directly at the valley station of the cable car is a Volg shop with groceries.

- Tip: take the sled down to the valley for shopping and take the cable car back.
- Tip: pre-order items at volgshop.ch and pick them up in the valley below.

There is a sports shop in the mountain station of the cable car.

Bread can be ordered during the winter season from the list on the counter in front of the indoor pool steps. Order daily until 12.00 p.m. (on Saturdays until 4.55 p.m.). Pick up the following day between 8.15am and 8.45am at the same location.

#### **TV / radio**

The Alpine Village has a modern television and radio reception system. TV stations are on channels 1-50, radio stations are on channels 51-65. Info channel on channel 1.

#### **To wash**

Two washing machines and two dryers are available in the central building. If free, these can be used by all guests at any time. Payment is by coin machine. Bring your own detergent. Please clean the devices after use (especially the fluff filter of the tumbler).

#### **WIRELESS INTERNET ACCESS**

We have set up a WLAN for our guests in the apartment. The access data are as follows:

Network name: 2.6\_H+W

Password: LauchernAlp3937

This network can now also be used to play music via AirPlay in the bathroom and bedrooms. The TV's are connected to the general AlpineVillage network. If the speed is not sufficient, these devices can also be connected to the new WLAN.

#### **Contact:**

If you have any questions or are unclear, you can contact us as follows:

#### **Owner / Host**

Francisco Heldner

+41 (0)76 444 03 00 (gerne auch per WhatsApp)

francisco.heldner@oberwallis.ch

#### **caretaker**

Michael Meyer

+41 (0)79 471 56 82

**We wish our guests a relaxing stay on the Lauchernalp!**

**Enjoy yourself 😊**